

## Data Sheet

### Zebov GP1,2

Zaire Ebola Virus, Recombinant GP1,2, C-terminal His-tag

**Catalog #:** w31014

**Lot #:** 141118-D **Conc:** 1.32 mg/ml

**Formulated in:** 8 mM phosphate, pH 7.4, 110 mM NaCl, 2.2 mM KCl, and 20% glycerol

**Stability:** At least 6 months at  $-80^{\circ}\text{C}$ . *Avoid freeze/thaw cycles. Storing diluted protein is not recommended, if necessary, use carrier protein (BSA 0.1 – 0.5%).*

**References:**

1. Lee, J.E., *et al.*, *Nature*. 2008; **454**(7201): 177-182.
2. Dube, D., *et al.*, *J. Virol.* 2009; **83**(7): 2883-2891.

**Description:** Zaire Ebola Virus (Zebov) glycoprotein 1,2 (GP1,2), also known as envelope glycoprotein, and GP with a C-terminal His-tag, a.a. 33-650, GenBank Accession No. NP\_066246, MW=68.7 kDa, expressed in a HEK293 cell expression system. This protein runs at a higher apparent molecular weight due to glycosylation.

**Application:** Useful for protein binding studies, screening inhibitors of protein-protein interactions, and studying protein function.

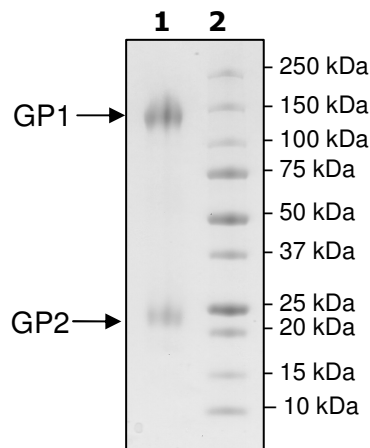
## Quality Assurance

**4-20% SDS-PAGE  
Coomassie staining**

**Lane 1:**  
7  $\mu\text{g}$  Zebov GP1,2

**Lane 2:**  
Protein Marker

**MW:** 68.7 kDa  
**Purity:**  $\geq 90\%$



OUR PRODUCTS ARE FOR RESEARCH USE ONLY. NOT FOR DIAGNOSTIC OR THERAPEUTIC USE.