

Data Sheet

VEGFR2/KDR

Human, recombinant, N-terminal GST tag

Catalog #: w50312

Lot#: 110322G2 **Conc.:** 0.20 mg/ml

Formulated in: 40 mM Tris pH 8.0, 110 mM NaCl, 2.2 mM KCl, 0.04% Tween, 20% Glycerol, 3 mM DTT

Stability: >6 months at -80°C

References:

1. Meyer, M. *et al.*, *EMBO J.* 18, 363-374 (1999).

2. Rahimi, N. *et al.*, *J. Biol Chem* 275, 16986-16992 (2000).

Description: Human VEGFR2 GenBank Accession No. AF035121), (a.a. 805-1356) with N-terminal GST tag, MW=87 kDa, expressed in a Baculovirus infected Sf9 cell expression system.

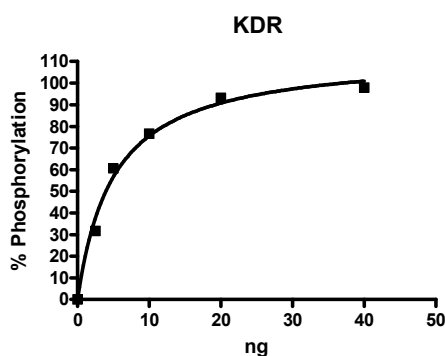
Specific Activity: 150 pmol/min/μg.

A unit of KDR activity is defined as the amount of enzyme required to produce 1 pmol of phosphorylated Tyr peptide 1 per min at 37°C. Enzyme reaction is conducted in a buffer containing 50 mM HEPES (pH7.5), 10 mM MgCl₂, 1 mM EGTA, 200 μM ATP, 0.01% Brij-35, 2 μM substrate (Tyr Peptide 1, Z-lyte kinase assay kit from Invitrogen), and 2 ng enzyme at 37° for 1 hour.

Application: Useful for the study of enzyme kinetics, screening inhibitors, and selectivity profiling.

Quality Assurance

VEGFR2 Specific Activity



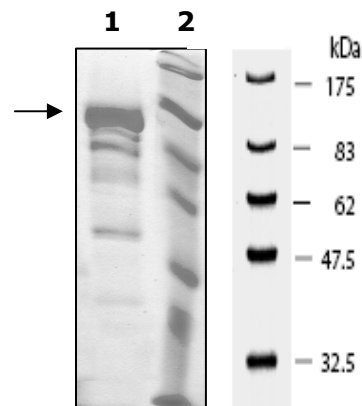
10% SDS-PAGE Coomassie staining

Lane 1:
3 μg VEGFR2

Lane 2:
Protein Marker
BioLabs (#P7708L)

MW: 87 kDa.

Purity: ≥63%



OUR PRODUCTS ARE FOR RESEARCH USE ONLY. NOT FOR DIAGNOSTIC OR THERAPEUTIC USE.