

Data Sheet

PIP5K1A

Human, recombinant, N-terminal GST-tag

Catalog #: w50316

Lot #: 141021

Conc.: 0.1 mg/ml

Formulated in: 50 mM Tris-HCl, pH 7.5, 150 mM NaCl, 10 mM glutathione, 0.1 mM EDTA, 0.25 mM DTT, 0.1 mM PMSF, 25% glycerol.

Stability: >6 months at -80°C . Avoid freeze/thaw cycles. Storing diluted protein is not recommended, if necessary, use carrier protein (BSA 0.1 – 0.5%).

References:

1. Pan, W., *et al.*, *Science*. 2008; **321**: 1350-1353.
2. Barrero-Villar, M., *et al.*, *J. Immunol.* 2008; **15**;181(10): 6882-6888.

Description: Human phosphatidylinositol 4-phosphate 5-kinase type-1 alpha (PIP5K1A) also known as PIP5K1 α , GenBank Accession No. BC_007833, MW = 86 kDa, full-length expressed in a baculovirus-infected Sf9 insect cell expression system.

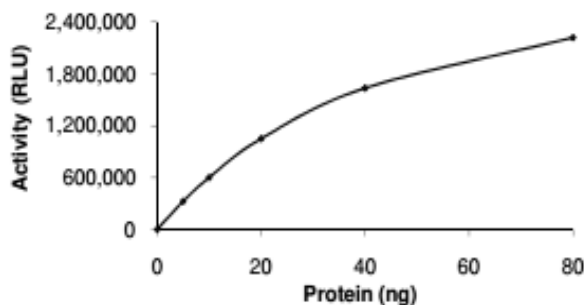
Specific Activity: 1310 pmol/min/ μg

Assay Conditions: 10 μl of varying amounts of PIP5K1A was mixed with 5 μl of 125 μM phosphatidylinositol 3,4-bisphosphate substrate and 5 μl of kinase dilution buffer. Reaction was initiated by adding 5 μl of 250 μM ATP assay solution, sonicating for 10 sec. and incubating for 15 min at 30°C . Add 25 μl of ADP-Glo (Promega), and incubate at room temp. for 40 min. with shaking Then add 50 μl Kinase Detection Reagent (Promega), incubate 30 min. at room temp. and read plate.

Application: Useful for studying enzyme kinetics and screening small molecule inhibitors.

Quality Assurance

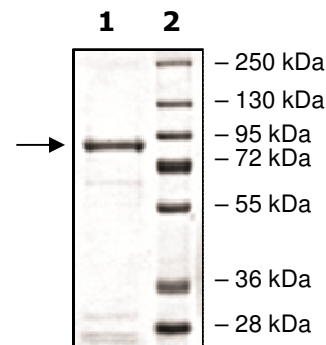
Specific Activity



4-20% SDS-PAGE Coomassie staining

Lane 1:
PIP5K1A
Lane 2:
Protein Marker

MW: 86 kDa
Purity: $\geq 90\%$



OUR PRODUCTS ARE FOR RESEARCH USE ONLY. NOT FOR DIAGNOSTIC OR THERAPEUTIC USE.