

Data Sheet

Abl-1(T315I)

Human, recombinant, N-terminal His-tag

Catalog #: w50426

Lot#: 80828

Conc.: 0.31 mg/ml

Formulated in: 25 mM Tris-HCl, pH 8.0, 100 mM NaCl, 0.05% Tween-20, 20% glycerol, and 3 mM DTT.

Stability: >6 months at -80°C

References:

1. Cao, C., *et al.* 2003. *J. Biol. Chem.* **278**(15): 12961-7.
2. Yano, H., *et al.* 2000. *J. Neurosci. Res.* **59**(3): 356-364.

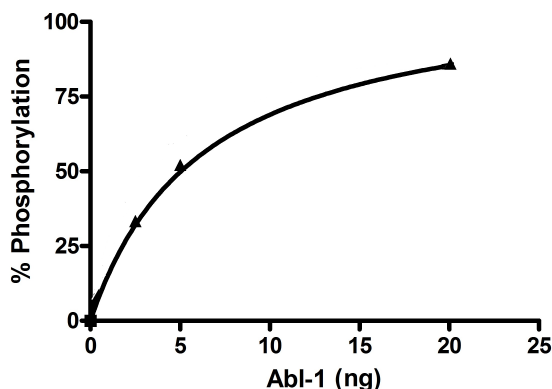
Description: Human Abelson murine leukemia viral oncogene homolog 1 (Abl-1), GenBank Accession No. NM_005157, a.a. 248-531, with Thr-to-Ile mutation on a.a. 315* and N-terminal His-tag, MW = 33 kDa, expressed in a baculovirus-infected Sf9 cell expression system. *This mutation is often cited as T334I in variant B (GenBank Accession No. NM_007313).
Specific Activity: 222 pmoles/min/μg.

Activity was determined using a 100% phosphorylated Tyr02 peptide and a Z-lyte kinase assay (Invitrogen). Reaction was incubated at 30°C for 1 hour.

Application: Useful for the study of enzyme kinetics, screening inhibitors, and selectivity profiling.

Quality Assurance

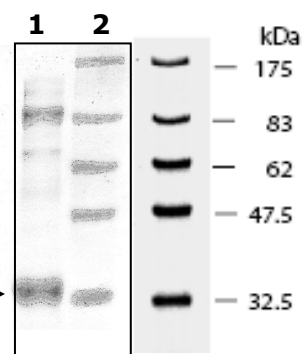
Abl-1 Specific Activity



10% SDS-PAGE Coomassie staining

Lane 1:
4 μg Abl-1
Lane 2:
Protein Marker

MW: 33 kDa
Purity: ≥54%



OUR PRODUCTS ARE FOR RESEARCH USE ONLY. NOT FOR DIAGNOSTIC OR THERAPEUTIC USE.