

## Data Sheet

### c-Myc

Human, recombinant, N-terminal His-tag

**Catalog #:** w50464

**Lot #:** 140617A

**Conc:** 4.8 mg/ml

**Formulated in:** 50 mM Tris-HCl, pH 8.0, 100 mM NaCl, 3 mM DTT, and 20% glycerol.

**Stability:** >6 months at  $-80^{\circ}\text{C}$ . Avoid freeze/thaw cycles. Storing diluted protein is not recommended, if necessary, use carrier protein (BSA 0.1 – 0.5%).

**References:**

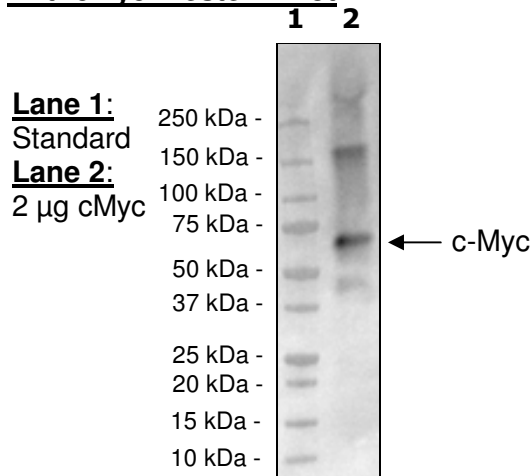
1. Perez, E.A., et al. *J. Clin. Oncol.* 2011; **29(6)**: 651-649.
2. Itkonen, H.M., et al. *Canc. Res.* 2013 ; **73**: 5277-5287.

**Description:** Human c-Myc, also known as MYC proto-oncogene, transcription factor p64, GenBank Accession No. NM\_002467, a.a. 2 - 454(end), N-terminal His-tag MW = 52 kDa, expressed in an E. coli expression system.

**Application:** Useful as a kinase substrate.

### Quality Assurance

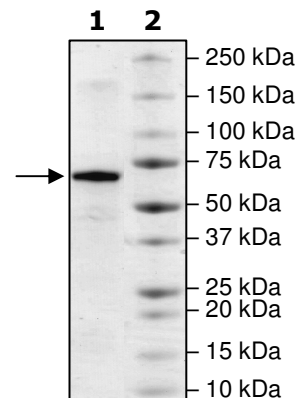
**Anti-cMyc Western Blot**



**4-20% SDS-PAGE  
 Coomassie staining**

**Lane 1:** 2 µg cMyc  
**Lane 2:** Protein Marker

**MW:** 52 kDa  
**Purity:** ≥90%



OUR PRODUCTS ARE FOR RESEARCH USE ONLY. NOT FOR DIAGNOSTIC OR THERAPEUTIC USE.



9891 Irvine Center Dr. Suite 200

Irvine, CA 92618

United States

Tel: 1.800.831.1518

Fax: 1.800.831.1518

Email: [sale@westbioscience.com](mailto:sale@westbioscience.com)

### *Sequence*

MHHHHHLEVLFGQPDFFRVVENQQPPATMPLNVSFTNRNYDLDYDSVQPYFYCDEE  
ENFYQQQQQSELQPPAPSEDIWKKFELLPTPPLSPSRRSGLCSPSYVAVTPFSLRGD  
NDGGGGSFSTADQLEMVTELLGGDMVNQSFICDPDDETFIKNIIIQDCMWSGFSAAAK  
LVSEKLASYQAARKDSGSPNPARGHSVCSTSSLYLQDLSAAASECIDPSVVPYPLN  
DSSSPKSCASQDSSAFSPSSDILLSSTESSPQGSPEPLVLHEETPPTTSSDSEEEQED  
EEEIDVVSVEKRQAPGKRSESGSPSAGGHKPPHSPLVLKRCHVSTHQHNYAAPST  
RKDYPAAKRVKLDVLRVLRQISNNRKCTSPRSSDTEENVKRRTHNVLERQRRNELKR  
SFFALRDQIPELENNEKAPKVILKKATAYILSVQAEEQKLISEEDLLRKRREQLKHKL  
EQLRNSCA

Red: His-tag

Blue: Precission site

Black: cMYC (a.a. 2-454(end))

OUR PRODUCTS ARE FOR RESEARCH USE ONLY. NOT FOR DIAGNOSTIC OR THERAPEUTIC USE.