

## Data Sheet

### Mouse PD-L1 (CD274), Fc fusion

Mouse, recombinant, C-terminal Fc fusion

**Catalog #:** w81128

**Lot #:** 150112

**Conc.:** 3.90 mg/ml

**Formulated in:** 8 mM phosphate, pH 7.4, 110 mM NaCl, 2.2 mM KCl, and 20% glycerol.

**Stability:** At least 6 months at  $-80^{\circ}\text{C}$ . Avoid freeze/thaw cycles. Storing diluted protein is not recommended, if necessary, use carrier protein (BSA 0.1 – 0.5%).

**References:**

1. Freeman, G.J., *et al.*, *J. Exp. Med.* 2000; **192(7)**:1027-34.
2. Dong, H., *et al.*, *Nat. Med.* 1999; **5(12)**:1365-9.

**Description:**

Mouse secreted Programmed Cell Death 1 Ligand 1 (PD-L1)-Fc fusion protein, also known as CD274 and B7 homolog 1 (B7-H1), GenBank Accession No. NM\_021893, a.a. 19-238, fused at the C-terminus to the Fc portion of mouse IgG2a, expressed in a HEK293 cell expression system. MW = 51.8 kDa.

**Application:**

Useful for the study of protein-protein interaction and *in vitro* and *in vivo* protein function studies.

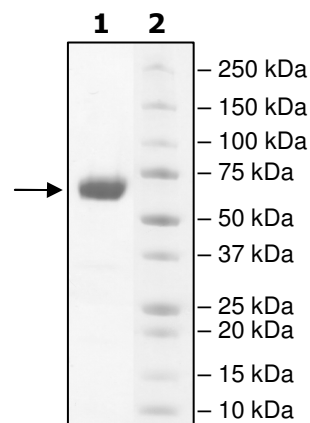
### Quality Assurance

**4-20% SDS-PAGE  
Coomassie staining**

**Lane 1:**  
3  $\mu\text{g}$  PD-L1-Fc

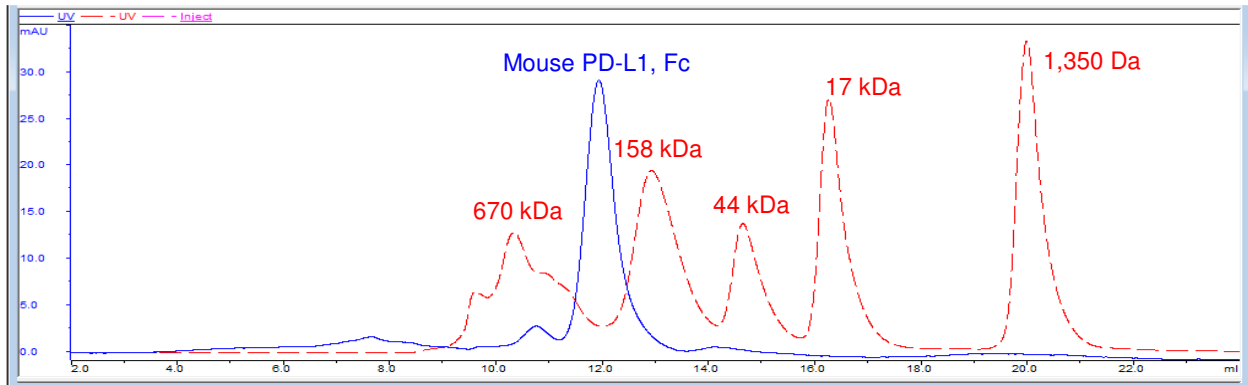
**Lane 2:**  
Protein Marker

**MW:** 51.8 kDa  
**Purity:**  $\geq 90\%$



OUR PRODUCTS ARE FOR RESEARCH USE ONLY. NOT FOR DIAGNOSTIC OR THERAPEUTIC USE.

## Gel Filtration Curve



OUR PRODUCTS ARE FOR RESEARCH USE ONLY. NOT FOR DIAGNOSTIC OR THERAPEUTIC USE.