

Data Sheet

UBE1

Human, recombinant, N-terminal FLAG tag

Catalog #: w90312

Lot#: 120112

Conc.: 0.17 mg/ml

Formulated in: 40 mM Tris-HCl, pH 8.0, 110 mM NaCl, 2.2 mM KCl, 80 ng/ μ l FLAG peptide, 20% glycerol, and 3 mM DTT.

Stability: >6 months at -80°C

References:

1. Su Z.L. *et al.*, *Leuk. Lymphoma* **49** (9), 1821-1822 (2008).
2. Ramser J. *et al.*, *Am. J. Hum. Genet.* **82** (1), 188-193 (2008).

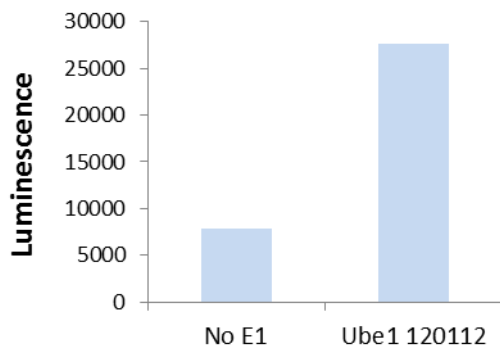
Description: Human UBE1 (GenBank Accession No. NM_003334), amino-acids 2-end, with N-terminal FLAG tag, MW=118 kDa, expressed in a Baculovirus infected Sf9 cell expression system.

Assay conditions: UBE1 (100 ng) was added to a reaction mixture containing 4 mM ATP, 2 mM DTT, 5 mM MgCl₂, 2.8 μ g Ubch7, 0.8 μ g Nedd4, and 0.5 μ g biotin-Ub in 50 mM Tris, pH 7.4. Reaction mix was incubated at 37°C for 30 min., then transferred into a streptavidin-coated plate and incubated for an additional 30 min at 37°C . The reaction mix was incubated with Anti-FLAG for 1 hour, then HRP secondary Ab for 30 min, followed by chemiluminescent detection.

Application: Useful in conjunction with E2 and E3 for the study of enzyme kinetics, screening inhibitors, and selectivity profiling.

Quality Assurance

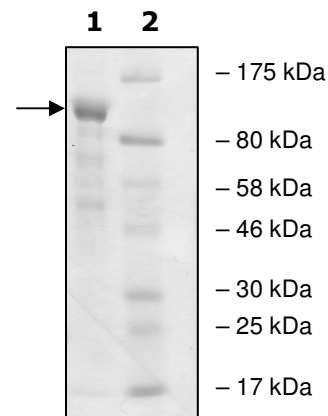
UBE1 Specific Activity



4-20% SDS-PAGE Coomassie staining

Lane 1:
2.6 μ g UBE1
Lane 2:
Protein Marker

MW: 118 kDa.
Purity: $\geq 68\%$



OUR PRODUCTS ARE FOR RESEARCH USE ONLY. NOT FOR DIAGNOSTIC OR THERAPEUTIC USE.